

can be diagnosed with routinely available laboratory blood tests, confirmation of the shunt requires further imaging techniques.

Transcolonic portal scintigraphy involves placement of a radioactive "dye" into the intestine (rectum) of an animal and recording the route of dye absorption. In a normal animal the dye is absorbed into the portal circulation and rapidly transported to the liver. In an animal with a portosystemic shunt, the dye bypasses the liver and appears in the heart first. This procedure is performed without sedation or anesthesia and takes only a few minutes to perform. *Transcolonic portal scintigraphy* is currently the most accurate and yet safest way available to confirm the diagnosis of a portosystemic shunt.

What can be done if my animal has a portosystemic shunt?

In cases of an extrahepatic shunt, the condition can usually be successfully treated by surgically closing the shunt vessel. This forces the blood collected from the gastrointestinal tract to flow into the liver and returns the portal blood flow to normal. In cases of an intrahepatic shunt, the surgery is significantly more complicated. Because the shunt vessel is less accessible, other procedures are usually performed to increase the portal blood flow to the liver. Most animals who have surgery performed early in the course of the disease will do well.

Are there treatment options other than surgery?

Most animals with portosystemic shunts can clinically improve with an adjustment in their diet and the administration of certain antibiotics. Unfortunately these methods do not repair the underlying disorder and usually become less effective in managing the condition over time.

Advanced Veterinary Medical Imaging has 2 convenient locations.

West Los Angeles

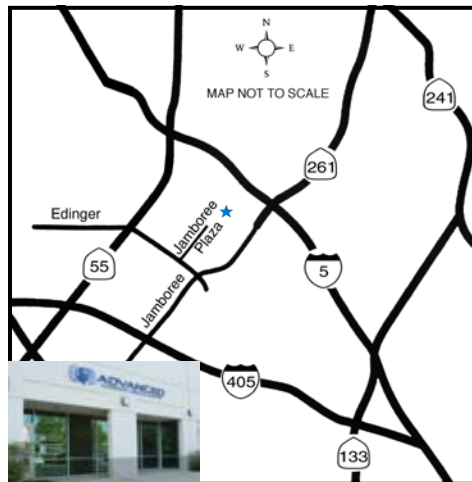
Located near the corner of Pico and Sepulveda, conveniently accessible from the 405 and 10 freeways.



2340 Sepulveda Blvd., Los Angeles, CA 90064
Tel: 310-477-4453

Orange County

Located in the Jamboree Plaza business park across from the Metrolink Parking lot.



3047 Edinger Ave., Tustin, CA 92780
Tel: 949-559-7289



Portal Scintigraphy Update

Transcolonic portal scintigraphy is a nuclear medicine procedure available for diagnosing portosystemic shunts in dogs and cats.

What is a portosystemic shunt and how would it affect my animal?

The portal system is comprised of the system of blood vessels collecting and draining blood from the stomach and intestines. This blood supply is rich in the nutrients absorbed from the diet. The portal blood supply also contains potentially large amounts of toxins some of which are absorbed from the diet and others that are produced by bacteria in the intestines. The liver receives approximately 75% of its blood supply from the portal system. By delivering

the blood collected from the gastro-intestinal tract to the liver first, the portal system ensures that the liver has the opportunity to utilize these nutrients. The delivery of the portal blood to the liver also ensures that the toxins absorbed from the gastro-intestinal tract are filtered out or inactivated in the liver before the blood is allowed into the rest of the body.

bypass the liver and go directly into the systemic circulation.

When a portosystemic shunt exists not only is the liver malnourished due to a lack of needed nutrients, but the rest of the body is subjected to potentially high levels of toxins that would normally have been filtered out or inactivated by the liver. Portosystemic shunts may develop in a blood vessel outside of the liver (extrahepatic) or in a blood vessel within the liver itself (intrahepatic).

The clinical signs in dogs and cats with portosystemic shunts are highly variable but usually involve poor growth and central nervous system signs that result from the presence of high levels of toxins in the blood stream. These central nervous system signs may include intermittent disorientation, pacing, circling, tremors and even seizures.

While the possibility of a portosystemic shunt

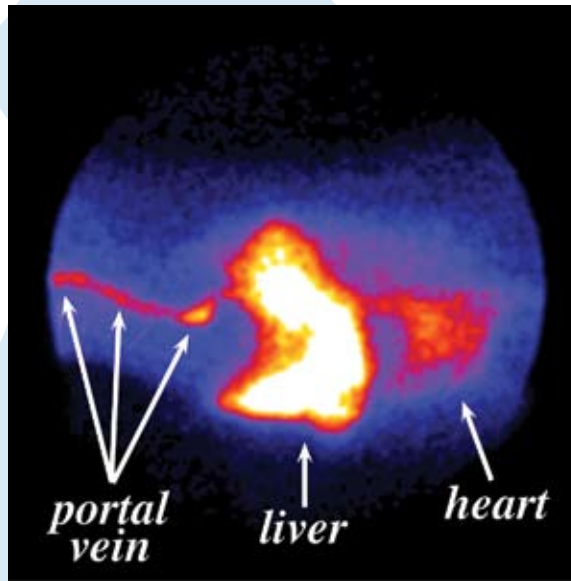


Figure 2. Composite image of a normal dog showing the uptake of the radioactive dye into the portal vein and liver.

A portosystemic shunt is an abnormal communication between the portal circulation and the systemic circulation (the blood supply to the rest of the body). This communication is usually an abnormal blood vessel that is present at birth (congenital). Occasionally the abnormal blood vessel may develop during the life of the animal (acquired) as a result of an ongoing liver disease. In either case the shunt vessel allows the blood from the gastro-intestinal tract to

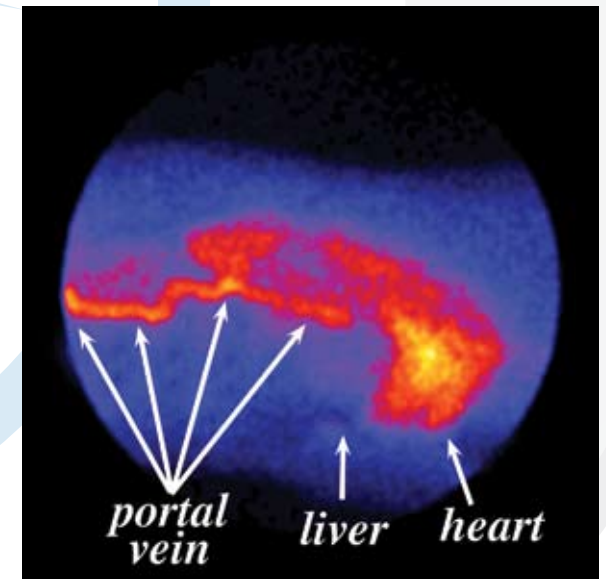


Figure 3. Composite image showing the uptake of a radioactive dye from the rectum into the portal vein. Notice that the dye bypasses the liver and appears in the heart and lungs first.

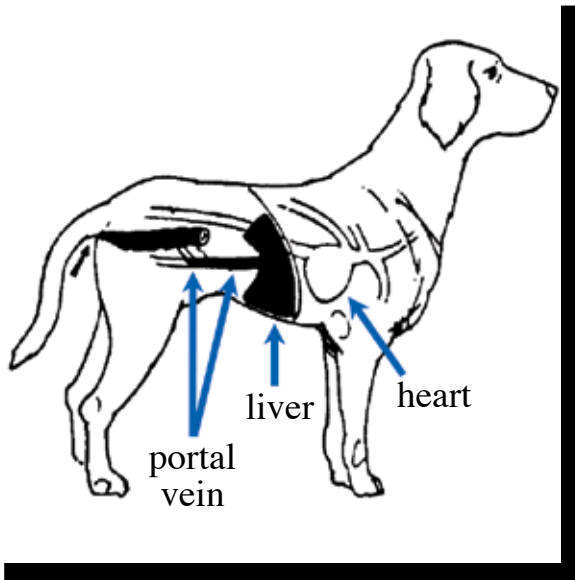


Figure 1. Schematic drawing of the normal portal circulation of a rectally administered material. Notice that the material is initially transported to the liver. (From Journal of Veterinary Internal Medicine 1991;5:23-27, J.B. Lippincott Co., Philadelphia, PA. Reproduced with permission.)